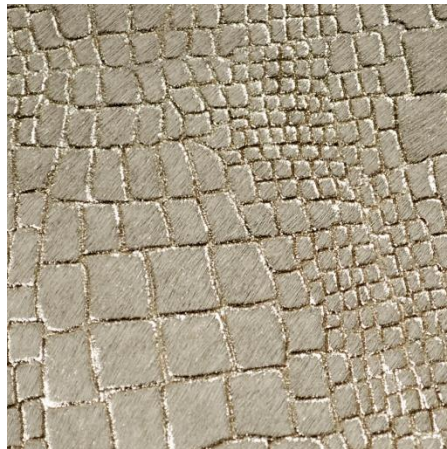


Chic Croc



Half Hide



This article is hand produced by skilled European artisans. It is a completely natural material, a perfect mixture between hair on cow skin and pure aniline. There is a foil application done by laser. For this reason, every skin is unique creating the real beauty of this article.

Details

Content: 100% genuine cowhide leather

Finish type: Chrome tanning without lime-yard working, leather dyed with mineral colors; leather not submitted to finishing

Country of origin: European

Hide size: 25 SF +/-

Thickness: 1.5 mm +/-

Flame Information

Pass: CA-117, NFPA-260

Care and Maintenance

Dust on a regular basis with a soft, clean, dry, or slightly damp dusting cloth. Gently remove spills immediately, blot and do not rub. Saddle soaps, solvents, or any harsh chemicals are never recommended.