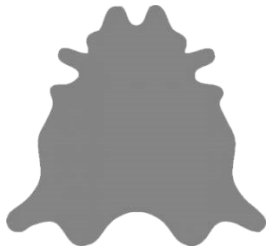
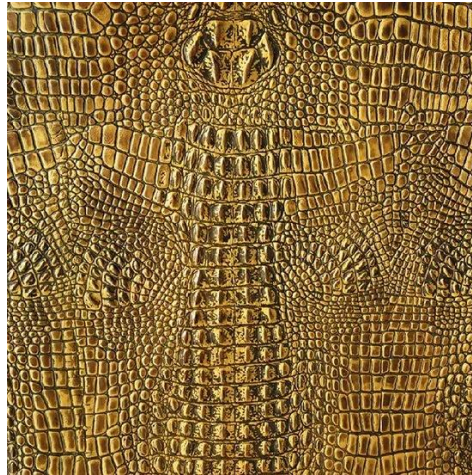


Animal Kingdom



Full Hide



Full Grain

Inherent in hides:

- Embossed
- Painted

Welcome to the KL Jungle! “Animal Kingdom” is going to put the *GROWL* in your next project!! “Animal Kingdom” resembles the top and underbelly of a crocodile. After embossing the pattern, the artisans begin the laborious process of hand staining all the grain. The result is leather that has a multi-tone genuine crocodile appearance. Teal Iguana is a matte finish, while Croco-delic, Desert Tortoise, Golden Phoenix, Komodo Dragon, Sneaky Snake and Silver Axolotl has an always stylish metallic finish.

Details

Content: 100% genuine cowhide leather

Finish type: Crocodile embossed, two tone hand stained

Country of origin: Italy

Hide size: 45 SF +/-

Thickness: 1.2 - 1.4 mm

Durability: More Durable

Flame Information

Pass: CA-117, NFPA-260

Care and Maintenance

Dust on a regular basis with a soft, clean, dry, or slightly damp dusting cloth. Gently remove spills immediately, blot and do not rub. Saddle soaps, solvents, or any harsh chemicals are never recommended.